



# Swagelok® Total Project Support: Stay on time and on budget

Swagelok Michigan provides comprehensive coverage during new and existing construction projects

The Total Project Support (TPS) program from Swagelok is designed to provide owner companies, architecture and engineering firms and contractors with comprehensive coverage during new construction projects and existing facility modifications. By assisting your personnel throughout the entire project, from planning and procurement to installation and validation, the TPS program helps ensure your project is completed on-time and within budget.

WE'RE WITH YOU  
THROUGH YOUR PROJECT'S ENTIRE LIFE CYCLE

1

PLANNING / ENGINEERING / DESIGN

2

PROCUREMENT

3

INSTALLATION

4

VALIDATION



**SUPPORT**

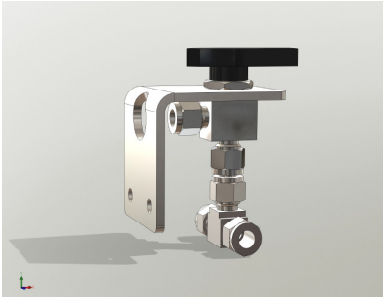
Your local sales and technical support team is available to support you while your project is in progress.

Swagelok Michigan | Toledo

Industrial Products & Services • Fluid System Assemblies • Training • Rentals

248.474.6624 | [michigan.swagelok.com](http://michigan.swagelok.com) | [info@michigan.swagelok.com](mailto:info@michigan.swagelok.com)





1

### Phase One: PLANNING / ENGINEERING / DESIGN

- More than 30,000 2-D and 3-D CAD and sales drawings accessible online at [swagelok.com](http://swagelok.com)
- Detailed reports of past project usage can be made available
- Custom Solutions assemblies for panels and skids
- In-house engineering department to assist in product specification process



2

### Phase Two: PROCUREMENT

- eStore purchasing option
- Certifications of compliance are available
- Special project pricing for qualified customers
- Guaranteed same-day shipment of “critical” project components
- Summary billing upon request
- On-site inventory management services
- Special packaging and kitting available



3

### Phase Three: INSTALLATION

- On-site, hands-on TPS installation seminars and certification
- Project toolkits available for customer loans
- Take advantage of the TPS Rental Program
  - Orbital welding systems
  - Electric tubing benders
  - Bench-top tubing benders
  - Hydraulic swaging units



4

### Phase Four: VALIDATION

- All TPS seminar attendees receive a Certification Card and a Swagelok® Gap Inspection Gauge to help verify proper installation procedures
- The TPS program also provides assistance with leak detection by utilizing the Snoop® liquid leak detector to identify leaks prior to start-up
- Customers receive a detailed Energy Survey report at the project's completion
- Swagelok Energy Advisors are available for steam system commissioning and documentation



Swagelok Michigan | Toledo

Swagelok Michigan | Toledo

Industrial Products & Services • Fluid System Assemblies • Training • Rentals  
248.474.6624 | [michigan.swagelok.com](http://michigan.swagelok.com) | [info@michigan.swagelok.com](mailto:info@michigan.swagelok.com)